

Model 6036 TELEHANDLER

SKYTRAK®

Performance

| | | |
|---------------------------------|-------------|----------|
| Rated Capacity | 6,000 lb | 2,722 kg |
| Maximum Lift Height | 36 ft 1 in. | 11.0 m |
| Load at Max Height | 6,000 lb | 2,722 kg |
| Maximum Forward Reach | 22.3 ft | 6.8 m |
| Load at Max Reach | 1,800 lb | 816 kg |
| Frame Leveling | 10° | |
| Lift Speed (boom retracted) | | |
| Up | 11 sec | |
| Down | 8 sec | |
| Boom Speed (extended/retracted) | | |
| Extended | 11 sec | |
| Retracted | 13 sec | |
| Top Travel Speed | 19 mph | 31 kph |
| Drawbar Pull (loaded) | 22,000 lb | 9,979 kg |
| Outside Turning Radius | 13.8 ft | 3.96 m |
| Operating Weight | 20,095 lb | 9,115 kg |

Standard Specifications

Engine

| | | |
|---------------------------|-----------------------|--------|
| Make and Model | Cummins QSB3.3L ATAAC | |
| No. of Cylinders | 4 | |
| Displacement | 202 cu in. | 3.3 L |
| Gross Power Basic | 85 hp | 63 kW |
| Maximum Torque @ 1600 rpm | 277 lb-ft | 376 Nm |
| Fuel Tank Capacity | 35 gal | 132 L |

Transmission

- Modulated powershift.
- 4-speed forward and 3-speed reverse.

Axles

- Full-time planetary 4-wheel drive.
- Oscillating rear axle with Stabil-Trak system.

Brakes

- Hydraulically actuated inboard wet disc brakes.
- Emergency brake with transmission declutch feature.

Tires

- Standard 370/75-28
- Optional Foam-Filled or Solid

Cab

- Certified ROPS/FOPS structure.
- Deluxe suspension seat with retractable seat belt.
- Rear view mirrors.

Steering 4-Wheel

- Power steering.
- Operator selectable 4-wheel circle, 4-wheel crab, 2-wheel front.

Instruments

- Instrument cluster with gauges and warning lights.



Hydraulic System-Implement

| | | |
|----------|--------|-------|
| Capacity | 60 gal | 225 L |
|----------|--------|-------|

- Piston pump.
- Variable flow, load sensitive hydraulic system.
- Load holding valves on frame level, stabilizer, attachment tilt, extend and lift cylinders.
- Auxiliary hydraulics used for all attachments equipped with cylinders or other hydraulic components. Consists of valves, controls and hydraulic lines.

Accessories & Options

- Enclosed Cab
- Work Lights
- Road Lights
- Rotating Beacon
- Fenders

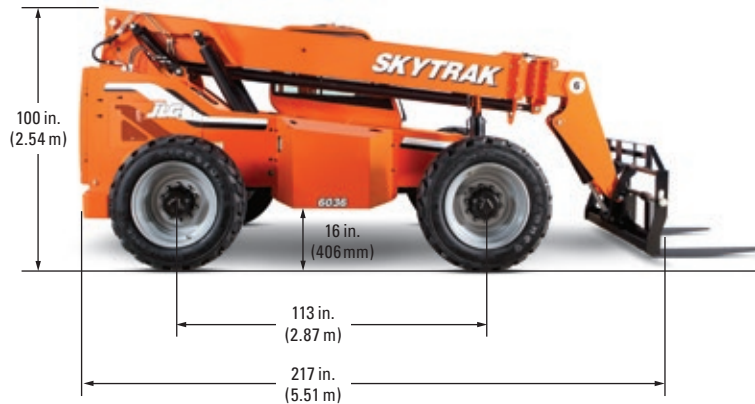
Attachments

| | | |
|--------------------------------|--|----------------------------|
| Standard Carriage | 50 in. | 1.3 m |
| | 60 in. | 1.5 m |
| | 72 in. | 1.8 m |
| Side-Tilt Carriage | 50 in. | 1.3 m |
| | 60 in. | 1.5 m |
| | 72 in. | 1.8 m |
| Swing Carriage (90°) | 72 in. | 1.8 m |
| Side-Shift Carriage | 50 in. | 1.3 m |
| Dual Fork Positioning Carriage | | |
| Tower | 8 ft (2.4 m); 50 in. (1.3 m) Standard Carriage | |
| Pallet Forks | 2.36 in. x 4 in. x 48 in. | 60 mm x 102 mm x 1.2 m |
| | 2.36 in. x 5 in. x 48 in. | 60 mm x 127 mm x 1.2 m |
| | 2.00 in. x 6 in. x 72 in. | 51 mm x 152 mm x 1.8 m |
| Lumber Forks | 1.75 in. x 7 in. x 60 in. | 44 mm x 178 mm x 1.5 m |
| | 2.36 in. x 6 in. x 60 in. | 60 mm x 152 mm x 1.5 m |
| Cubing Forks | 2 in. x 2 in. x 48 in. | 51 mm x 51 mm x 1.2 m |
| Fork Extensions | 90 in. | 2.3 m |
| Material Bucket | 72 in., 1.0 cu yd | 1.8 m, 0.76 m ³ |
| | 96 in., 1.5 cu yd | 2.4 m, 1.15 m ³ |
| | 102 in., 2.0 cu yd | 2.6 m, 1.53 m ³ |
| Grapple Bucket | 96 in., 1.75 cu yd | 2.4 m, 1.34 m ³ |
| Truss Boom | 12 ft, 2,000 lb | 3.7 m, 907 kg |
| | 15 ft, 2,000 lb | 4.6 m, 907 kg |
| | 12 ft with winch, 2,000 lb | 3.7 m, 907 kg |
| Fork Mounted Work Platform | 8 ft, 1,000 lb capacity | 2.4 m, 455 kg capacity |
| Lifting Hook | | |

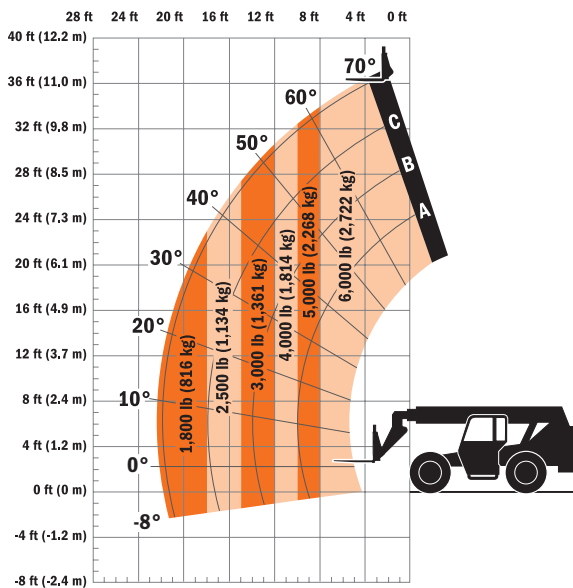
Model 6036 TELEHANDLER

Dimensions

All dimensions are approximate.



Load Chart and Dimensions



IMPORTANT

Rated lift capacities shown are with machine equipped with carriage and pallet forks. The machine must be level on a firm surface with undamaged, properly inflated tires. Machine specifications and stability are based on rated lift capacities at specific boom angles and boom lengths. (If specifications are critical, the proposed application should be discussed with your dealer.) DO NOT exceed rated lift capacity loads, as unstable and dangerous machine conditions will result. DO NOT tip the machine forward to determine the allowable load. Use only JLG approved attachments with proper material handler model/attachment load capacity charts displayed in the operator's cab. OSHA requires all rough terrain forklift operators be trained according to OSHA 29 CFR 1910.178 (1).

Due to continuous product improvements, JLG Industries reserves the right to make specification and/or equipment changes without prior notification. This machine meets or exceeds ASME B56.6-1998 as originally manufactured for intended applications.



JLG Industries, Inc.
 1 JLG Drive
 McConnellsburg, PA 17233-9533
 Telephone 717-485-5161
 Toll-free in US 877-JLG-LIFT
 Fax 717-485-6417
www.jlg.com

An Oshkosh Corporation Company

Form No.: SS-ST10054-0605-15M
 Part No.: 3132404
 R101205
 Printed in USA